

Stop end press coupling

Material

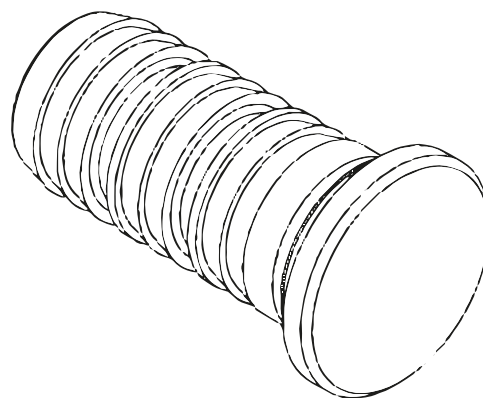
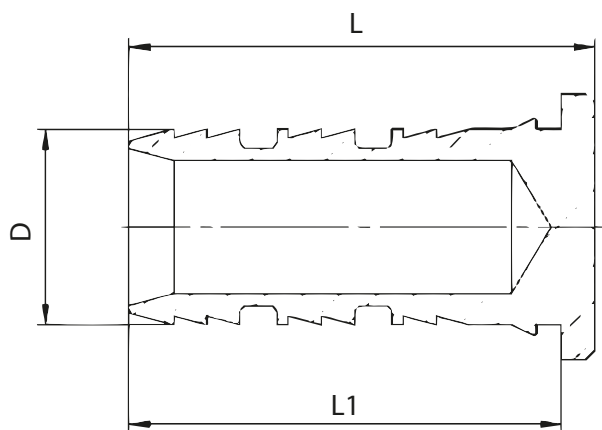
- Main body: pressed brass type CW617, nickel-plated from the outside, on surfaces, which do not have contact with water –
- full anti-diffusion barrier
- Clamping ring: stainless steel
- O-ring gasket: EPDM

Area of application

- Installations of hot & cold tap water
- Central heating (radiator connections)
- Surface heating (underfloor and wall heating installations)
- Ice water

Dimensions

Size	L	L1	D	Code
16	28	26	11,8	06011803



Tweetop sp. z o.o.
Ludowa 24c | 71-700 Szczecin

Scope of delivery

Main body with sealing and clamping rings