

Material

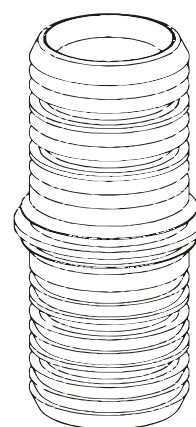
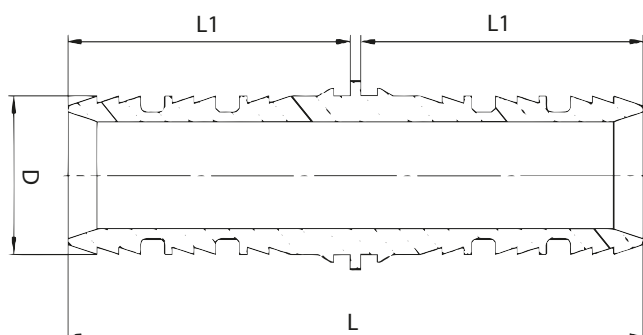
- Main body: pressed brass type CW617, nickel-plated from the outside, on surfaces, which do not have contact with water –
- full anti-diffusion barrier
- Clamping ring: stainless steel
- O-ring gasket: EPDM

Area of application

- Installations of hot & cold tap water
- Central heating (radiator connections)
- Surface heating (underfloor and wall heating installations)
- Ice water

Dimensions

Size	L	L1	D	Code
14x14	53	26	9,8	06011001
16x16	53	26	11,8	06011003
18x18	53	26	13,8	06011005
20x20	53	26	15,8	06011007
25x25	66,2	32,6	19,8	06011009
32x32	66,2	32,6	25,8	06011011
40x40	92	45	31,8	06011013
50x50	92	45	40,8	06011015
63x63	138	68	50,7	06011017
75x75	138	68	59,6	06011019



Overview

The connection between the pipe and the fitting is obtained by pressing the pipe into the fitting's profile. The pressing should be made in the connection area, with a pressing tool equipped with U-type inserts, matched to the type of fitting used. The tightness of the connection chamber is guaranteed by two O-rings, perfectly integrated into the joint area. Pressed connections can be used in the floor groove or a wall furrow.



Tweetop sp. z o.o.
Ludowa 24c | 71-700 Szczecin

Scope of delivery

Main body with sealing and clamping rings